

Bb

Bourbon Street Parade

3

8

16

24

32

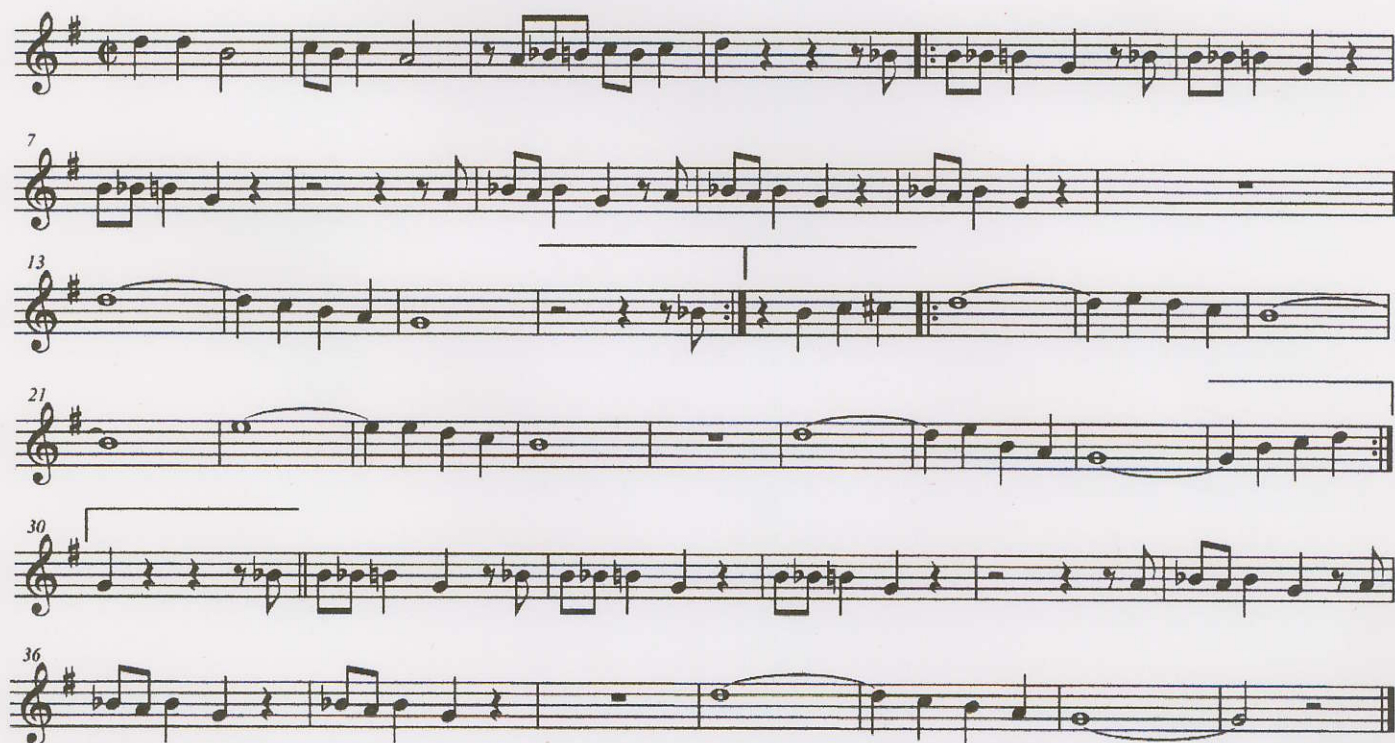
Bb

Just a Closer Walk



Canal Street Blues

Bb



Bb

When You're Smiling



Bb

When the saints



Bb

Laughing Samba

e

7

15

21

This musical score for 'Laughing Samba' is written for a single melodic line in treble clef. The key signature is B-flat major, indicated by one flat (Bb) and a sharp (F#). The time signature is 2/4. The piece begins with a repeat sign and a first ending bracket. The melody is characterized by eighth and sixteenth notes, with some rests. The score is divided into four systems, with measure numbers 7, 15, and 21 marked at the beginning of their respective lines. The piece concludes with a double bar line.

Bb

Just a little while

9

17

25

This musical score for 'Just a little while' is written for a single melodic line in treble clef. The key signature is B-flat major, indicated by one flat (Bb) and a sharp (F#). The time signature is 2/4. The piece begins with a repeat sign and a first ending bracket. The melody is characterized by eighth and sixteenth notes, with some rests. The score is divided into four systems, with measure numbers 9, 17, and 25 marked at the beginning of their respective lines. The piece concludes with a double bar line.